



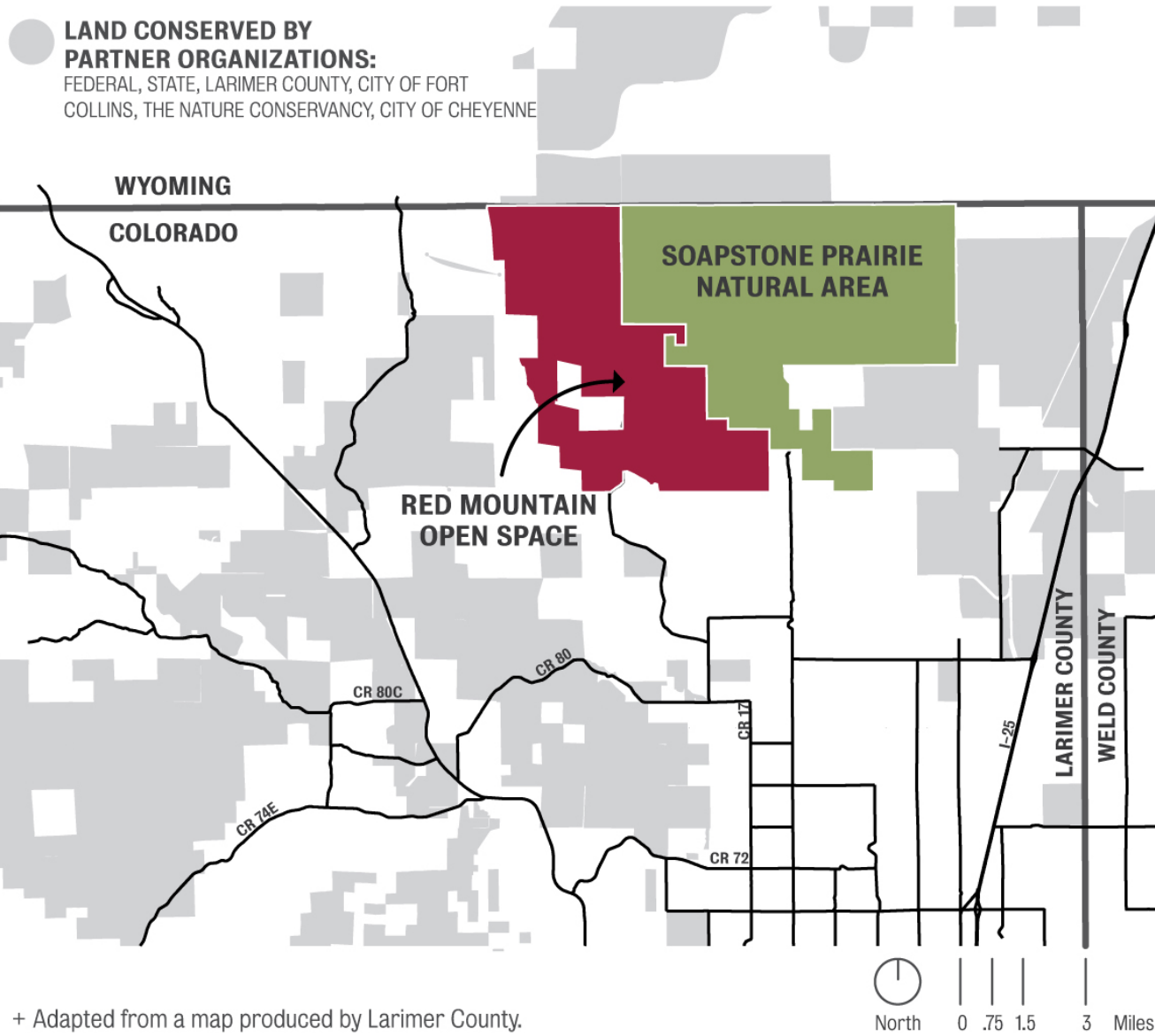
COLLEGE OF VETERINARY
MEDICINE AND
BIOMEDICAL SCIENCES



LARAMIE FOOTHILLS BISON CONSERVATION HERD

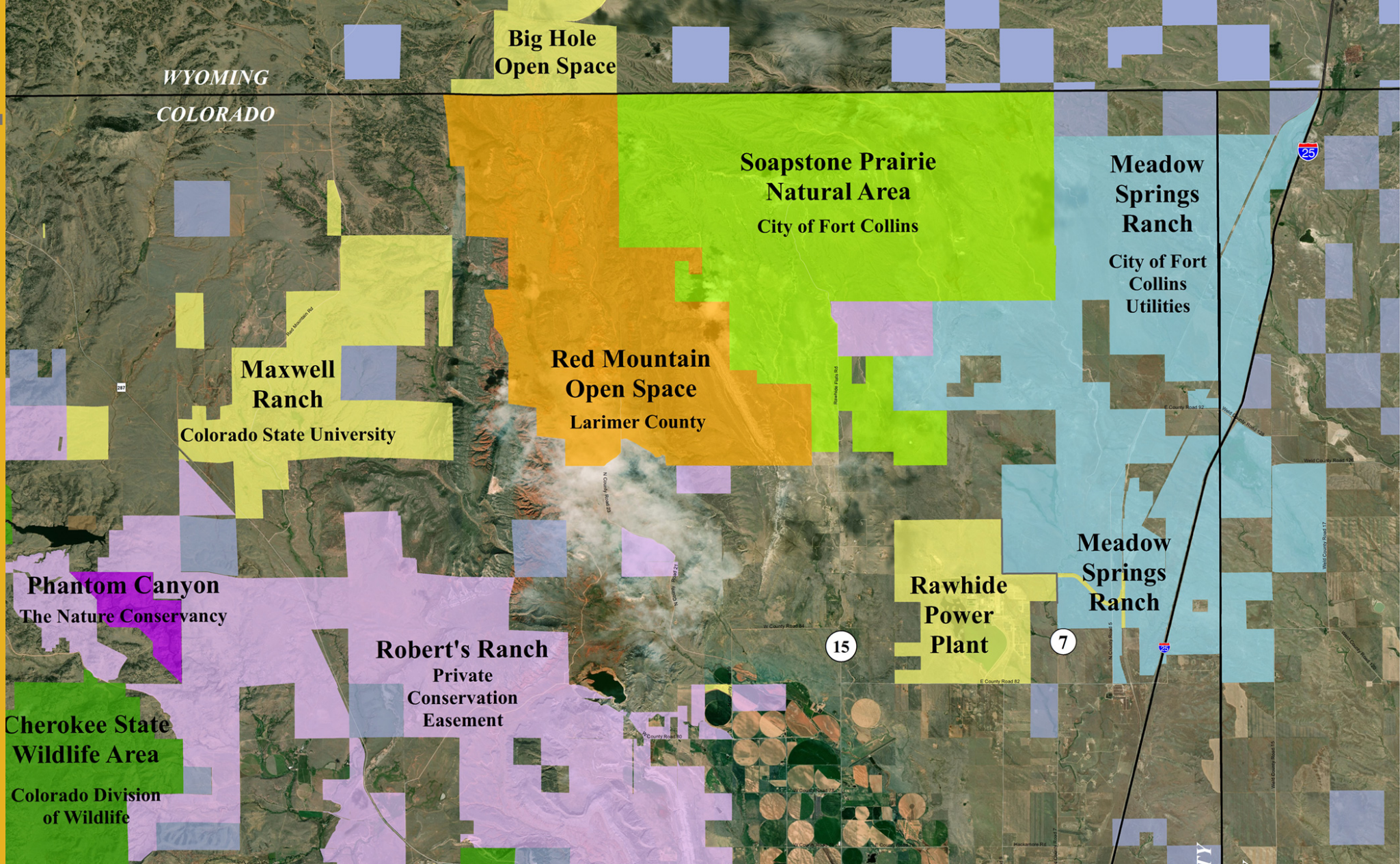


CONTEXT



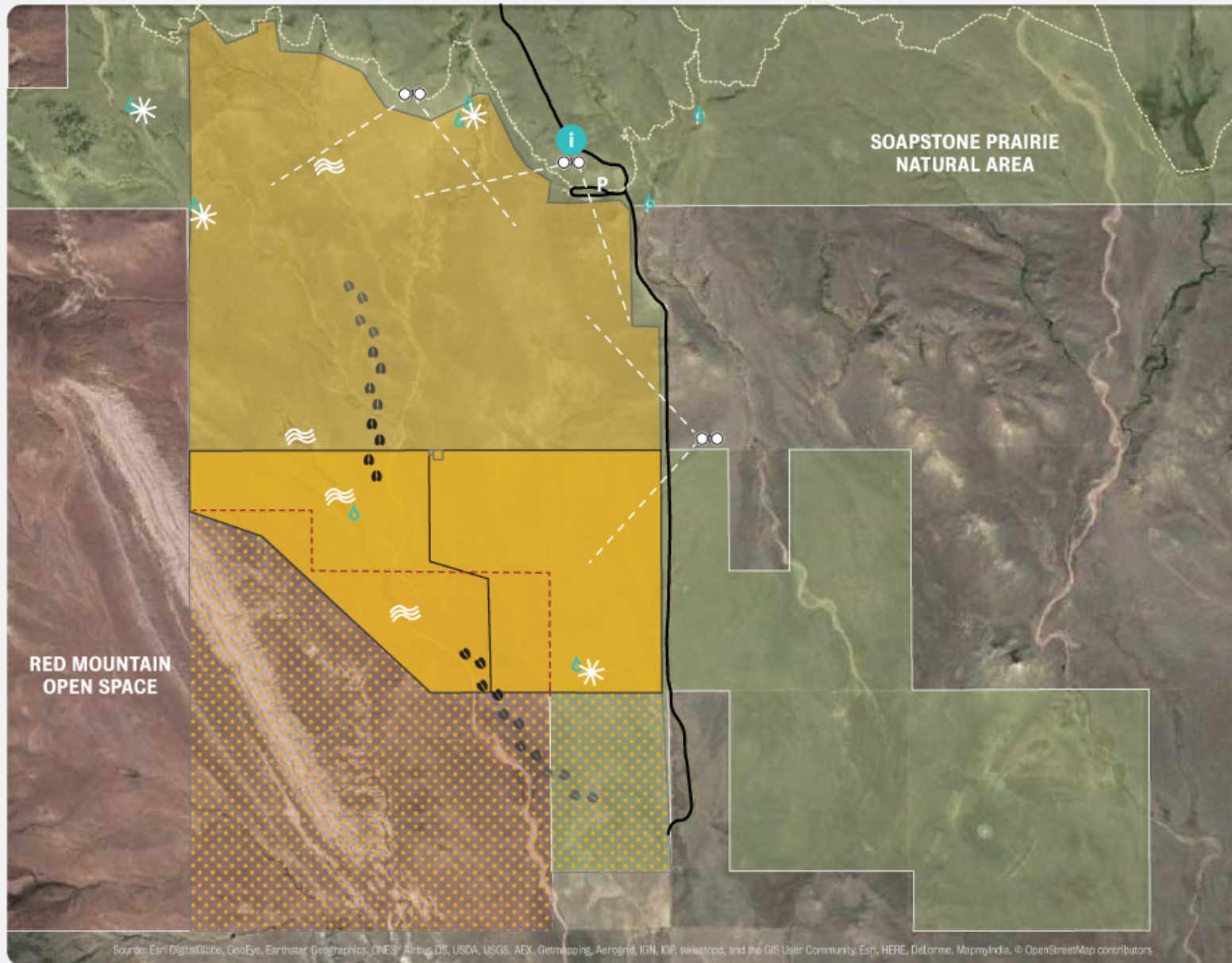
Laramie Foothills | Mountains to Plains Project

CONTEXT



Laramie Foothills | Mountains to Plains Project

PHASING



Sources: Esri DigitalGlobe, GeoEye, Earthstar Geographics, CNES/Airbus DS, USDA, USGS, AEX, Getmapping, Aerogrid, IGN, IGP, swisstopo, and the GIS User Community, Esri, HERE, DeLorme, MapmyIndia, © OpenStreetMap contributors

- PHASE I**
~1,000 acres:
750 Soapstone Prairie
250 Red Mountain
 - Fencing + water improvements completed in 2015.
- PHASE II**
~1,700 acres at Soapstone Prairie
 - Fencing improvements completed December 2017; pasture opened to bison in 2018.
- POTENTIAL EXPANSION**
From 500 (feasible) to 1,450 (aspirational) acres could be added south of the Phase I pasture.
- WINDMILLS**
- SURFACE WATER**
- STOCK TANKS**
- PUBLIC PARKING**
- MAIN ACCESS ROAD**
- TRAILS**
- VIEWING OPPORTUNITIES**
- i INTERPRETIVE SIGNAGE**
- POTENTIAL CONTIGUOUS PASTURE**
- North 0 500 1,000 2,000 Feet

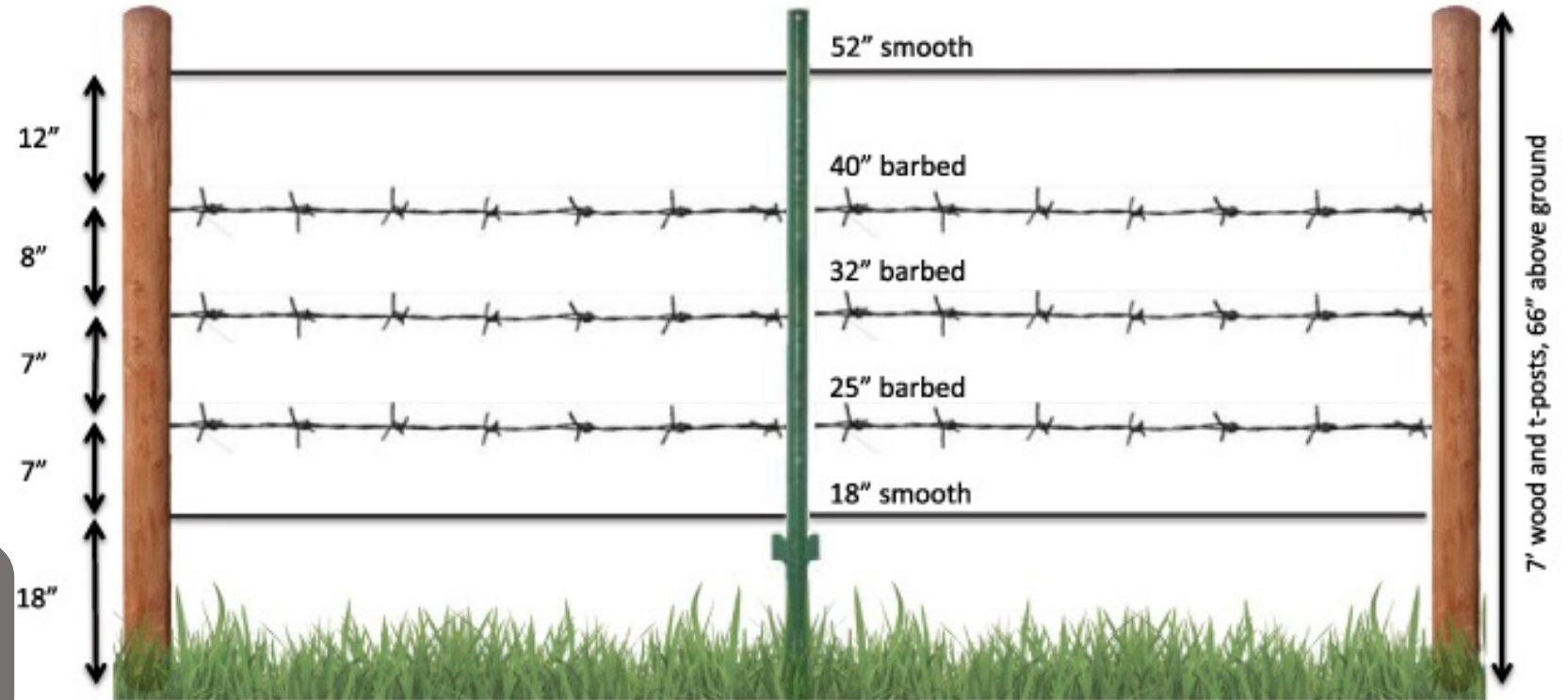
**GRAZING
PARTNERSHIP**



Fencing Design Specs

Soapstone/Red Mountain Bison Pasture

City of Fort Collins Larimer County Colorado State University USDA-APHIS



INFRASTRUCTURE

- ☒ CPW Wildlife Fencing Standards
- ☒ Galvanized 12 ½ ga smooth wire
- ☒ Galvanized 14 ga barbed wire
- ☒ 9 ga 1 ½ in staples

- ☒ 7' tall, 5" diameter wooden posts
- ☒ Standard t-post (1.33 lbs./ft)
- ☒ H-braces @ 800 ft spacing or significant change w/ 8' tall, 6" posts
- ☒ 60" tall rough stock rodeo gates



DISCUSSION

- **Fencing with wildlife in mind**
- **Water development**
- **Range expansion**
- **Shared land use**

Justin Fredrickson

Land Management Technician

City of Fort Collins Natural Areas Department

970-416-2527 jfredrickson@fcgov.com